

# Endangered Species Act Lands Deed Acceptance ORD

Parks and City Light Committee

May 20, 2026

© Keith Lazelle Photography



Seattle City Light

WE POWER SEATTLE

# City Light's Endangered Species Act (ESA) Land Program

---

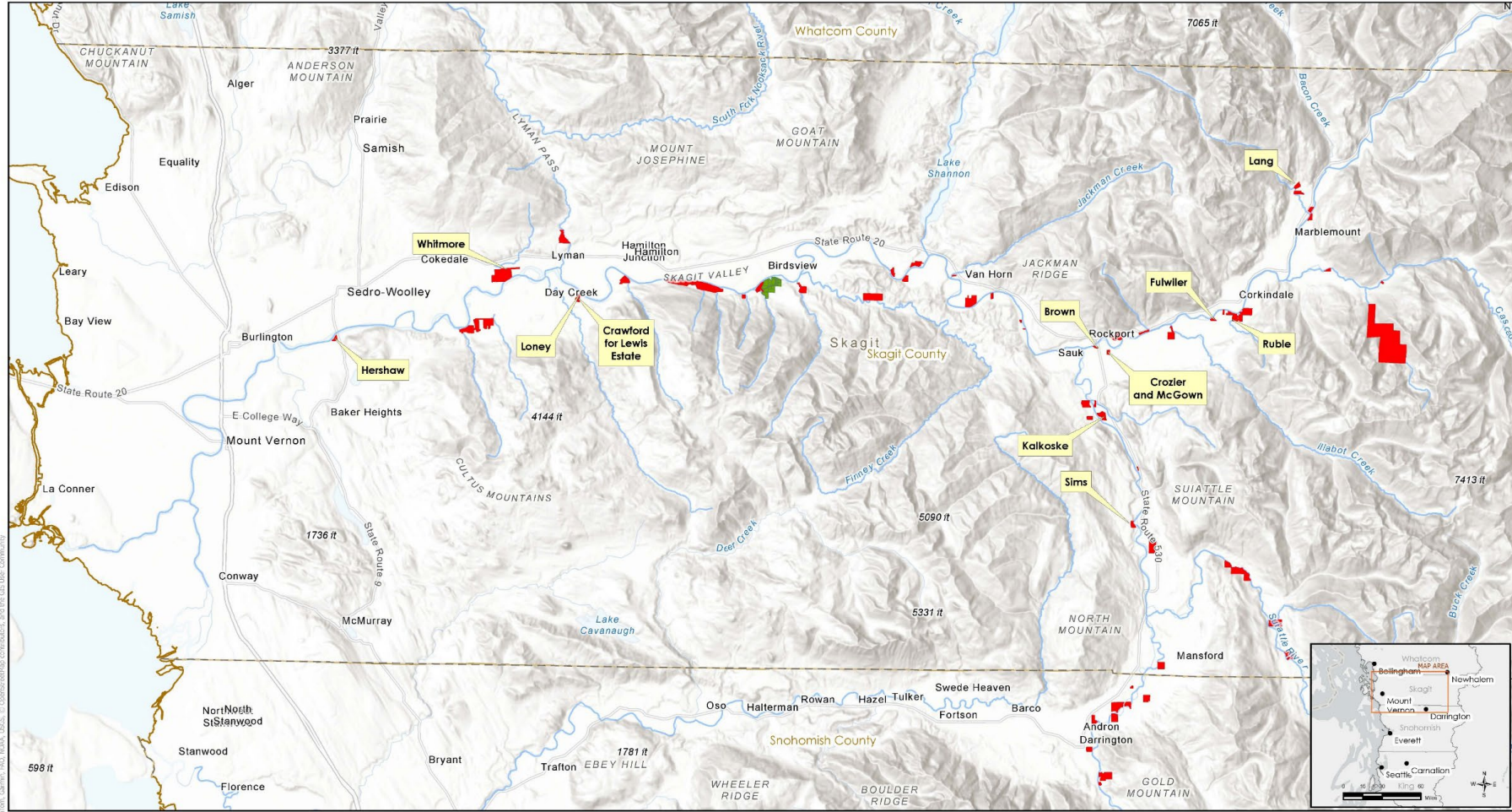
- *Voluntary program* began in 2000 with the federal ESA listing of Chinook salmon and bull trout to protect their critical habitat.
- 3,900 acres of fish habitat in the Skagit and Tolt watersheds purchased to date.
- Purchases are consistent with *regional salmon recovery plans*.
- Since the program's beginning, funded by \$6.9 million SCL and \$10.6 million grant dollars (multiple funding sources).



# City Light's Endangered Species Properties

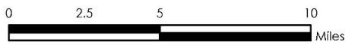
Summary Att 2 – Map of Properties  
V1

This map is intended for illustrative or informational purposes only and is not intended to modify anything in the legislation.



## Endangered Species Act Properties

Created 2/10/2026, by Seattle City Light, Environment, Land and Licensing Division. SCL provides no warranty, expressed or implied, as to the accuracy, reliability or completeness of this data.

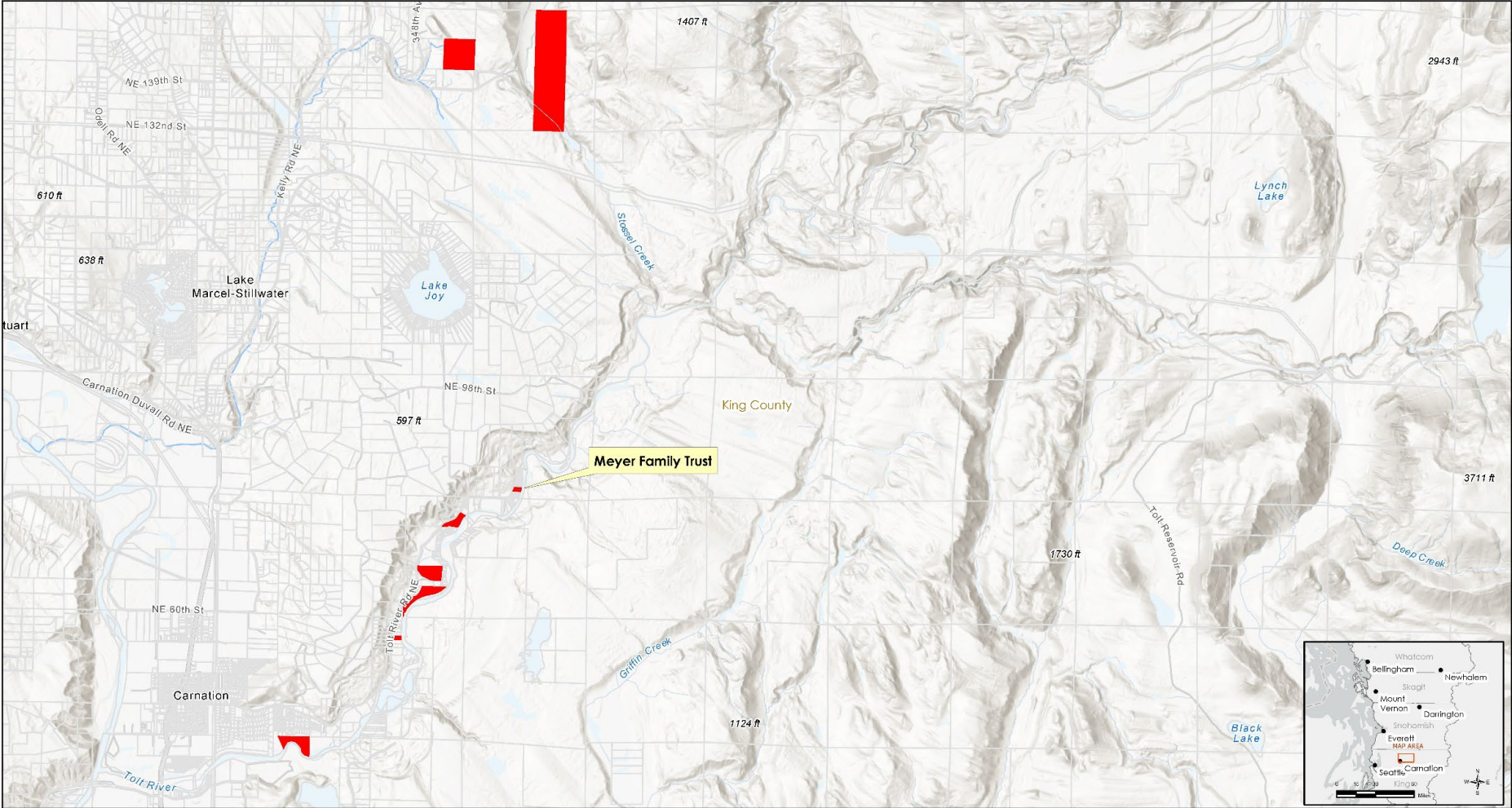



- Legend
- Land Program
  - Endangered Species Act Lands (SCL)
  - Combined Program ESA-Wildlife-Fish

# Endangered Species Act Properties

Summary Att 1 – Map of Properties (King Co)  
V1

This map is intended for illustrative or informational purposes only and is not intended to modify anything in the legislation.



 **Seattle City Light**

Created 11/5/2025, by Seattle City Light,  
Environment, Land and Licensing Division.  
SCL provides no warranty, expressed or implied, as to the  
accuracy, reliability or completeness of this data.

**Endangered Species Act Properties**

0 1 2 4 Miles



Legend

Land Program

 Endangered Species Act Lands (SCL)

# Summary of ESA Deed Acceptance Ordinance

---

- 10 properties totaling 366 acres in the Skagit watershed and one property of .9 acres in the Tolt watershed.
- Accepts the Deeds of Right required by the grant funding to 8 properties.
- Ratifies acceptance of WA Salmon Recovery Board grants.
- Funded by \$860,000 SCL and \$5 million Salmon Recovery Funding Board (WA) grant dollars.



A scenic view of a river with rapids, framed by moss-covered tree trunks. The water is a vibrant blue-green color, and the surrounding forest is lush with green moss and trees. The word "Questions?" is overlaid in the center of the image.

# Questions?



**Seattle City Light**

**WE POWER SEATTLE**

# THANK YOU

---



Seattle City Light