

Distribution & Platted Easements ORDs

Sustainability, City Light, Arts & Culture Committee

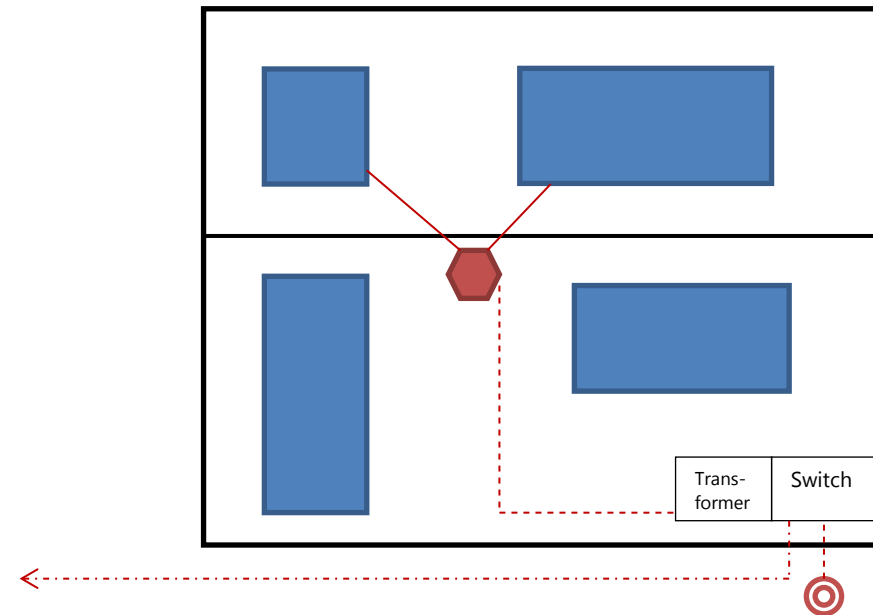
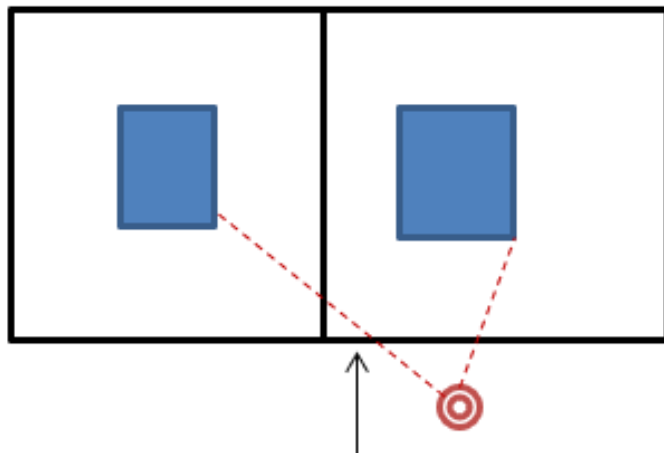
March 21, 2025

Why We Are Here

- An **easement** is a legal right to use or access the land of another for a specific purpose, without a possessory interest.
- The Seattle City Charter requires that all acquisition and disposal of real property interests must be by ordinance.
- City Light periodically requests that the City Council accept by ordinance the electrical service easements acquired through changes in our distribution system and through land use permitting actions.

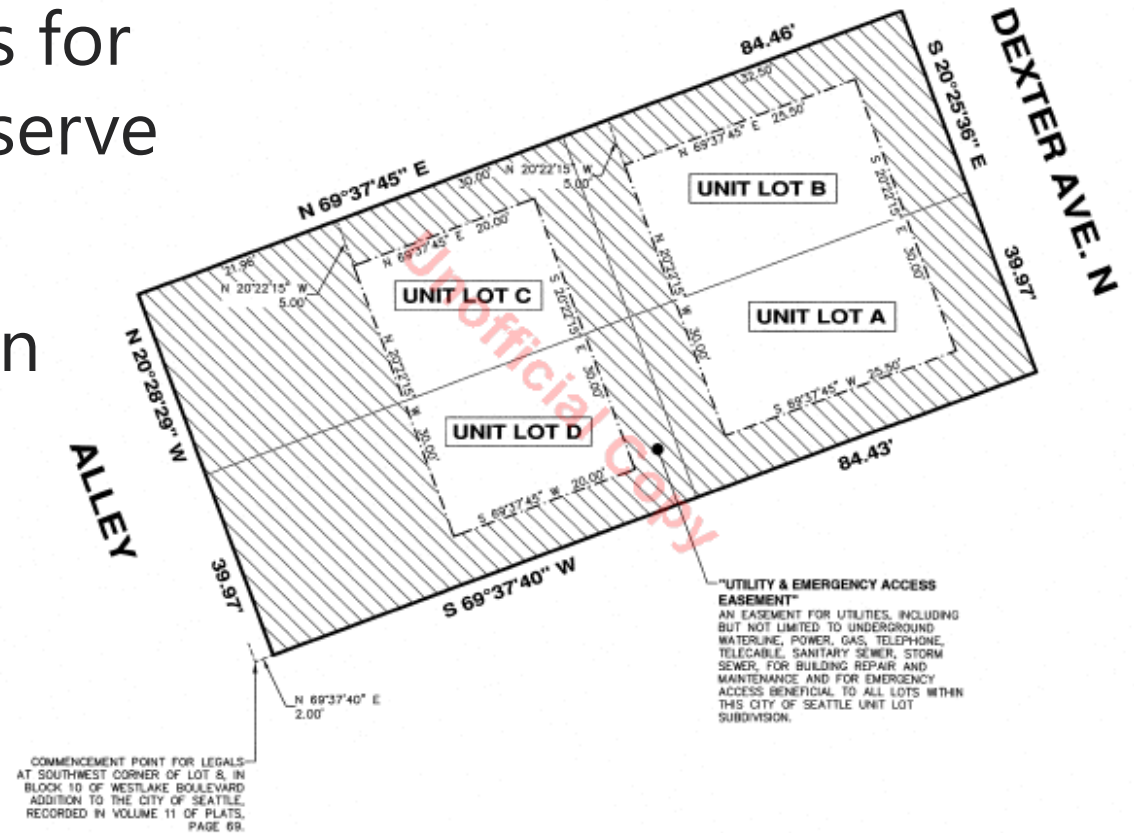
2024 Distribution Easements

- Number of Accepted Easements: 61
- Distribution easements are required whenever portions of City Light's distribution system are located on private property
- The distribution system can be overhead (poles, wires, transformers, anchors), underground (vaults, handholes, conduits, pad-mount equipment, wire) or a combination of both



2024 Platted Easements

- Number of Accepted Easements: 129
- Provide required property rights for electrical facilities necessary to serve our customers power needs.
- These easement are contained in short plats, lot boundary adjustments, and unit lot subdivisions.



THANK YOU



Seattle City Light