

# Distribution & Platted Easements ORDs

Sustainability, City Light, Arts & Culture Committee

March 21, 2025

# Why We Are Here

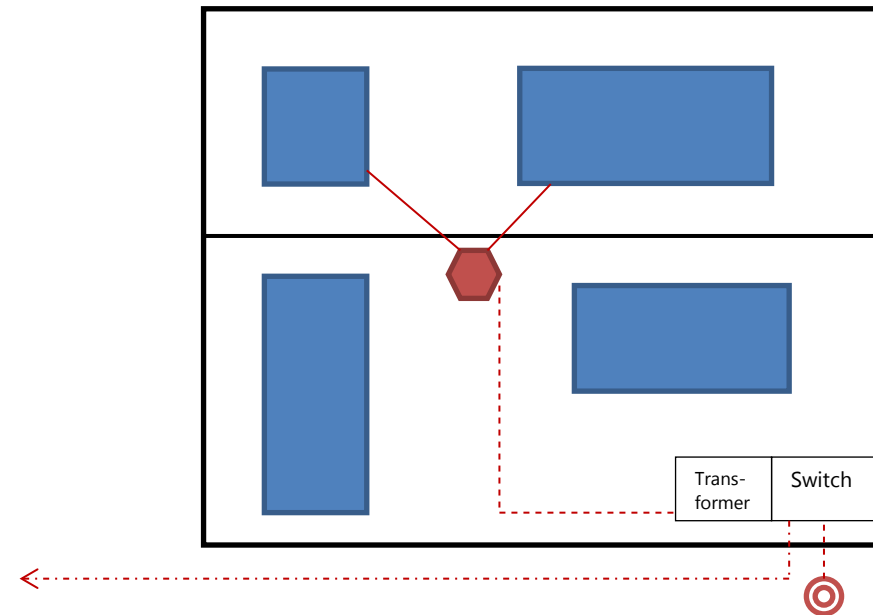
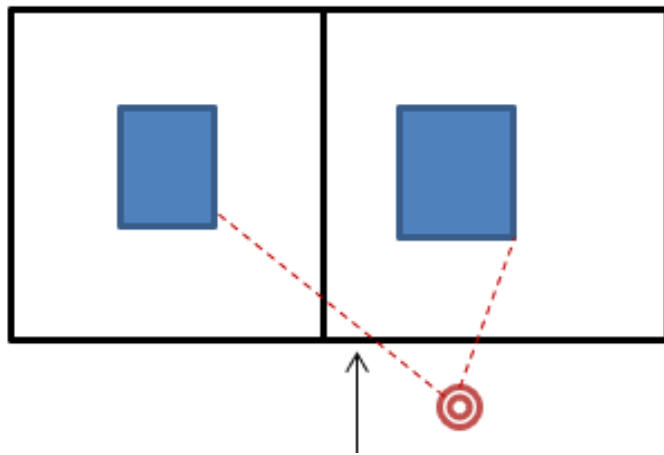
---

- An **easement** is a legal right to use or access the land of another for a specific purpose, without a possessory interest.
- The Seattle City Charter requires that all acquisition and disposal of real property interests must be by ordinance.
- City Light periodically requests that the City Council accept by ordinance the electrical service easements acquired through changes in our distribution system and through land use permitting actions.

# 2024 Distribution Easements

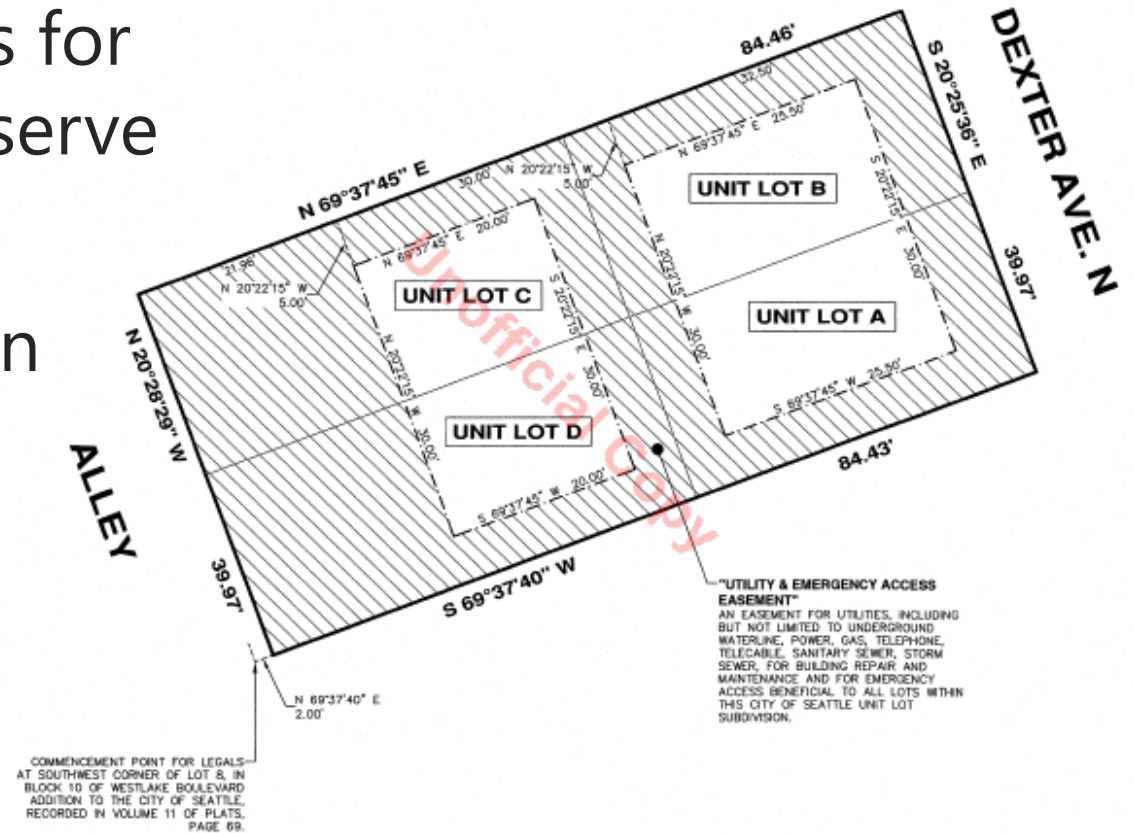
---

- Number of Accepted Easements: 61
- Distribution easements are required whenever portions of City Light's distribution system are located on private property
- The distribution system can be overhead (poles, wires, transformers, anchors), underground (vaults, handholes, conduits, pad-mount equipment, wire) or a combination of both



# 2024 Platted Easements

- Number of Accepted Easements: 129
- Provide required property rights for electrical facilities necessary to serve our customers power needs.
- These easement are contained in short plats, lot boundary adjustments, and unit lot subdivisions.



# THANK YOU

---



**Seattle City Light**